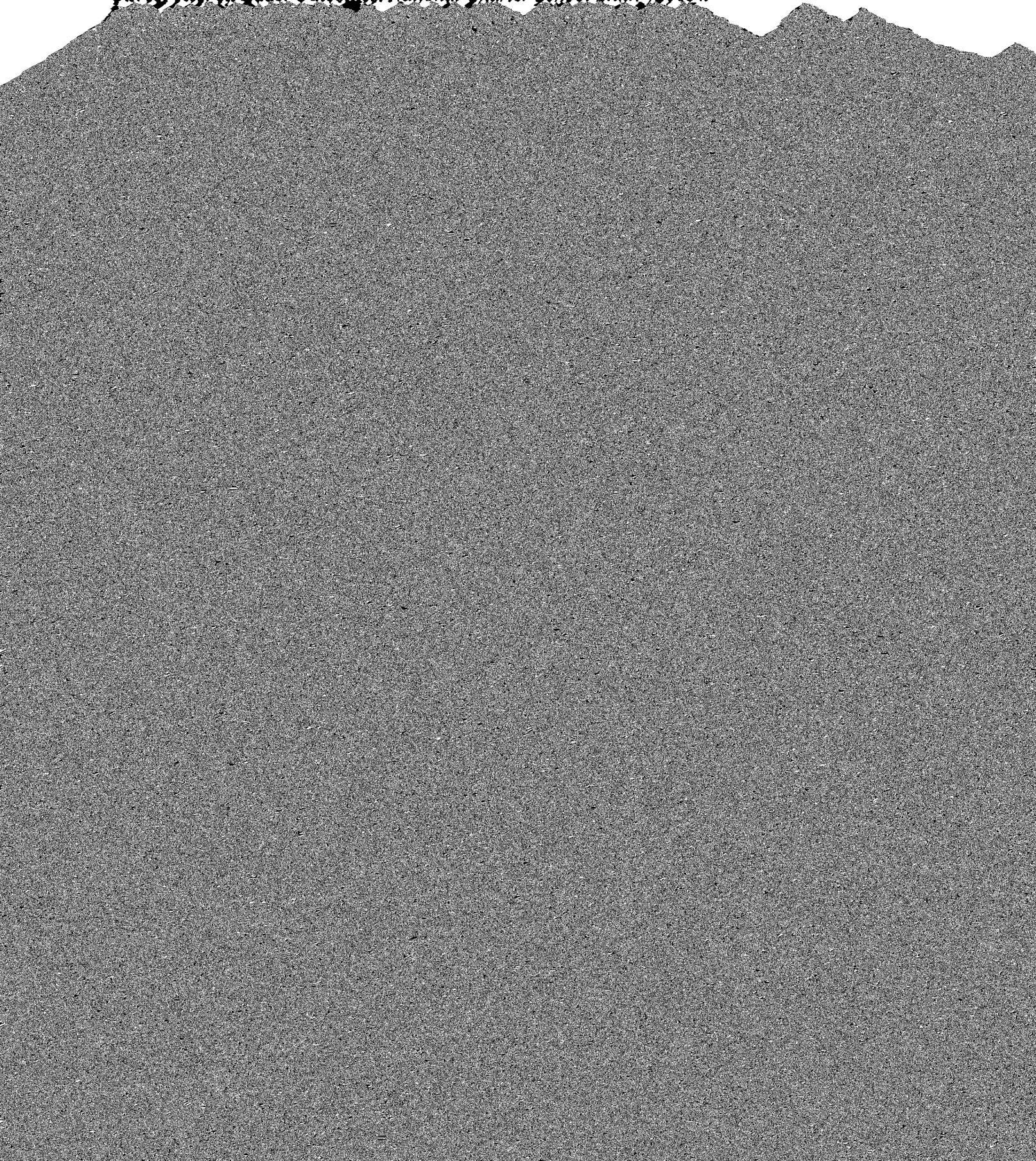


Ctr. for Res. on Educ. Outcomes, *Multiple Choice: Charter School Performance in 16 States*
(2009), <https://stanford.io/1n1HydD>5

Ctr. for Res. on Educ. Outcomes, *National Charter School Study* (2013).



Minnesota law than to the ideals of early charter school proponents.¹⁵ The result has been disappointing academic performance on the one hand and a raft of mismanagement and fraud on the other.

According to a 2006 study from the National Center for Education Statistics, charter school

is about \$40,000 per year²⁵—more than double the amount spent per student D.C. Public

Schools.²⁶ And SEED students were also “more likely to graduate in four years than students

English and mathematics tests. And in both of the years for which data are available, the only

CONCLUSION

For the foregoing reasons, ~~amicus~~ the Mississippi Association of Educators respectfully

