



PLC ▲ Southern Poverty Center

## About the Southern Poverty Law Center

The Southern Poverty Law Center (SPLC) is a 501(c)(3) nonprofit organization that monitors and exposes those who promote hate and violence in America. We are the nation's largest and most effective watchdog for civil liberties and social justice. We litigate, educate, and expose the work of extremists and hate groups. We have successfully litigated numerous cases in the Supreme Court, the U.S. Circuit Courts of Appeals, and the U.S. District Courts. We have won the Nobel Peace Prize, the Pulitzer Prize, and the National Book Award.

...

FOR MORE INFORMATION, VISIT  
THE ● THE N ● E ● LA ● CEN ● E

OUR WEBSITE AT [www.splcenter.org](http://www.splcenter.org)

OR CALL 1-800-388-3434

OR VISIT [www.splcenter.org](http://www.splcenter.org)



@splcenter



Facebook/SPLCenter



THE EXPLOITATION OF  
J-1 CULTURAL EXCHANGE WORKERS



E EC E, A

"A  
 E  
 M D D H  
 J,  
 M J,  
 J, I J,  
 J, E  
 C  
 F A  
 D  
 B I  
 E  
 -F  
 -E J,  
 M  
 J,  
 J,

... ..



... .. -F

J, ... ..

... .. LC

... .. A

... .. D

... .. J, ... ..

... .. -F

... ..

... .. J, ... ..

... .. J, ... ..

B, ... .. -I

... .. D

... .. J, ... ..

... .. D

... .. -J, ... ..

... .. -A

... .. -E

... .. J, ... ..

... .. J, ... ..

... ..

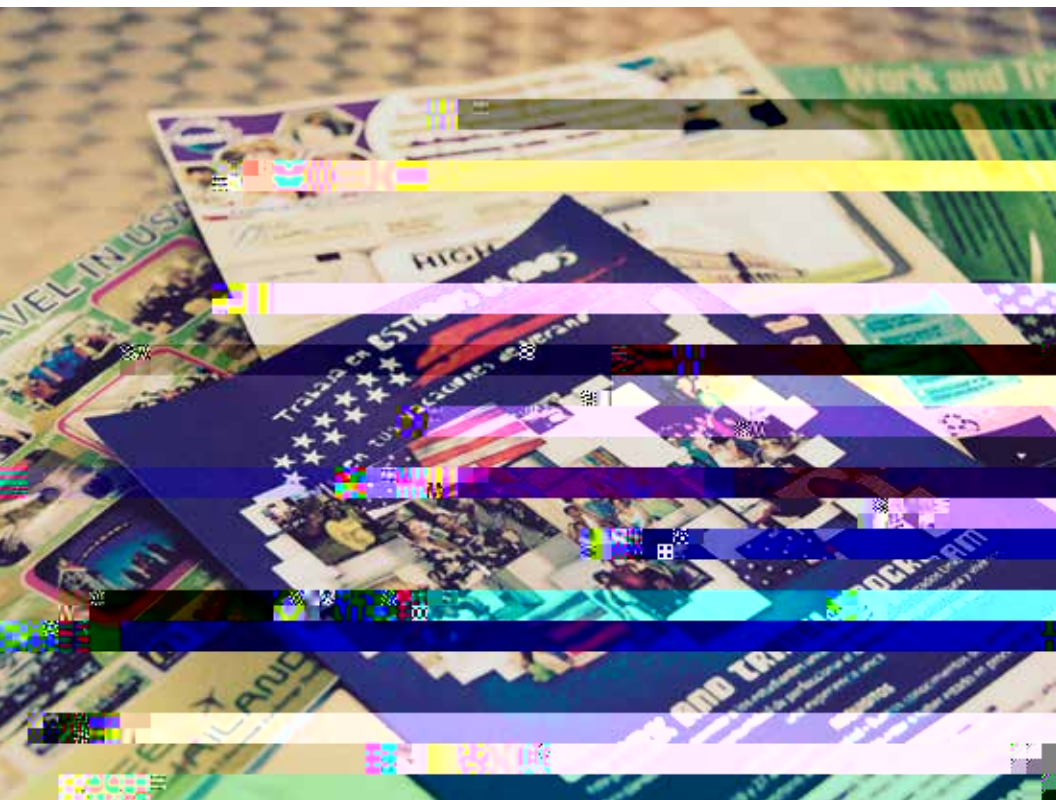
... ..

I  
J,  
J,  
J,  
J,  
I,  
J,  
B LC LC  
A  
J,  
H B,  
J,  
J,

☒

# What is the J-1 Visa Exchange Visitor Program?

The J-1 Visa Exchange Visitor Program is a temporary, non-immigrant visa category that allows individuals from various countries to visit the United States for a limited period. The program is designed to promote international understanding and cultural exchange between the United States and other countries. Participants in the J-1 program are typically students, scholars, researchers, and professionals who are invited to the United States to study, conduct research, or gain work experience. The program is administered by the U.S. Department of State, and participants must be sponsored by a designated organization in their home country. The J-1 visa is subject to a two-year home-country residence requirement, which means that participants must return to their home country for a specified period after their visit. The program is a key component of the United States' international relations and cultural exchange efforts.



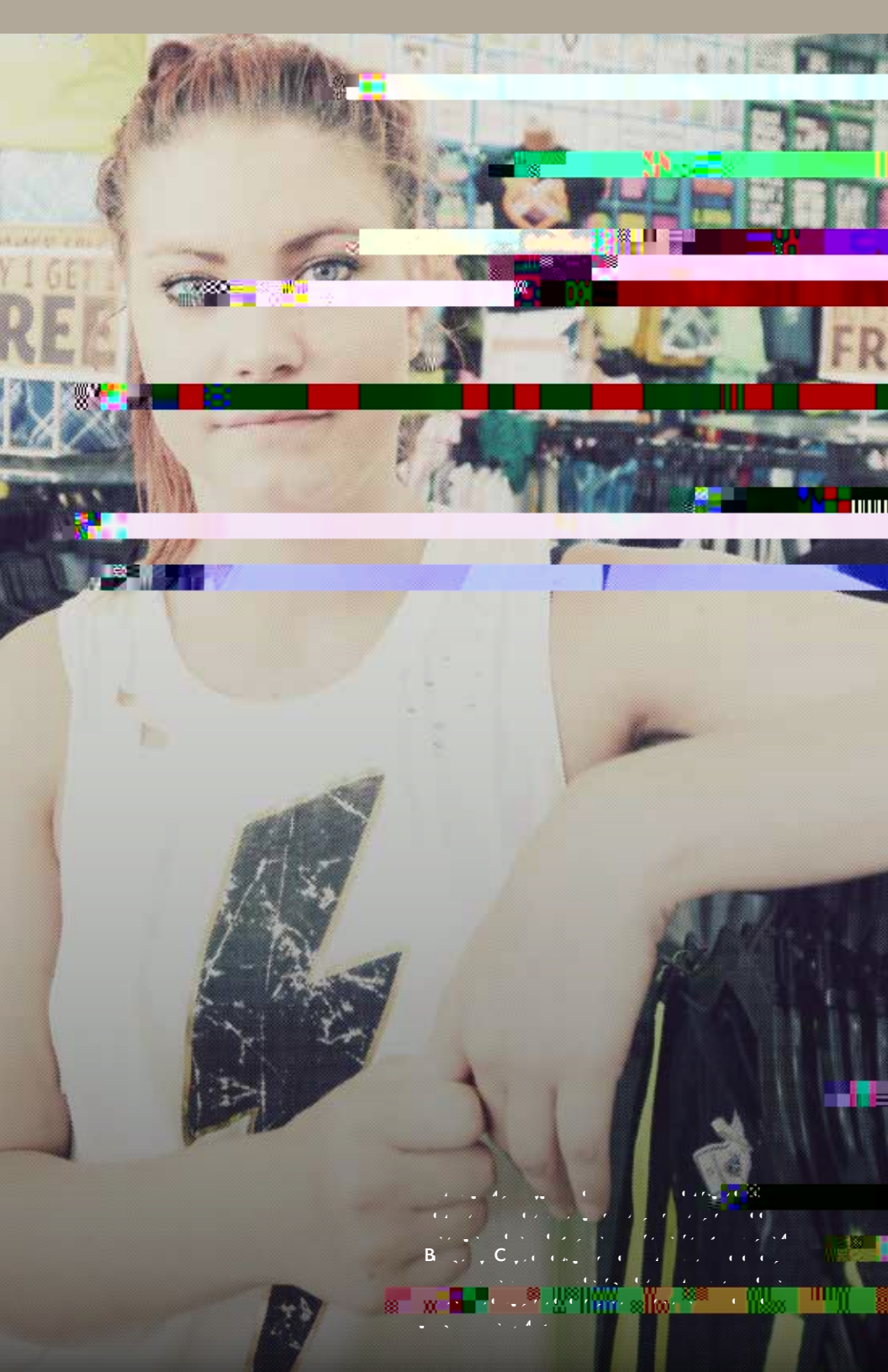


## Key points to know about the J-1 program

- **M**ost J-1 visas are issued for a period of 12 months, but some are issued for 5 years. The length of the visa depends on the category of the visa. For example, the J-1 visa for students is issued for 12 months, while the J-1 visa for researchers is issued for 5 years.
- **J** visa holders are required to maintain a residence in their home country. They are not allowed to work in the United States. However, they are allowed to engage in academic or research activities. The J-1 visa is also subject to the two-year home-country residence requirement. This means that after the visa expires, the holder must return to their home country for a period of two years before being eligible to re-apply for a J-1 visa.
- **I**nsurance is required for all J-1 visa holders. The insurance must be provided by the sponsor or the visa holder. The insurance must cover medical expenses, repatriation expenses, and other costs. The minimum amount of insurance coverage is \$100,000.
- **J** visa holders are required to file a tax return. They are also required to pay taxes on their income earned in the United States. The tax rate for J-1 visa holders is generally lower than the tax rate for other non-resident aliens.
- **D**ependent visas are available for the spouse and children of J-1 visa holders. The dependent visas are issued for the same period as the principal visa. The dependent visas are also subject to the two-year home-country residence requirement.

, EC E

# Foreign students deceived, exploited with little recourse



B C



## 'Essentially work programs'

LC  
I J, I I  
E C J,  
D M

H

G

A

-H

I

J

N

G

A

H

NGA

-I

C

I

I

J

M D

H

NGA

A

F

A

**Complaints to sponsors may fall on deaf ears**

A

J

D

D

*sponsors,*

-E

D

J

LC

D

J

-I



LC

D

G

D

D

G

I

A

G

IG

J

A

IG

B

J

D

L

J

L

J

D

**U.S. workers have few protections when employers hire J-1s**

J

J

J

I

B

I

J

I

A



1917  
A  
1918  
1919  
1920  
1921  
1922  
1923  
1924  
1925  
1926  
1927  
1928  
1929  
1930  
1931  
1932  
1933  
1934  
1935  
1936  
1937  
1938  
1939  
1940  
1941  
1942  
1943  
1944  
1945  
1946  
1947  
1948  
1949  
1950  
1951  
1952  
1953  
1954  
1955  
1956  
1957  
1958  
1959  
1960  
1961  
1962  
1963  
1964  
1965  
1966  
1967  
1968  
1969  
1970  
1971  
1972  
1973  
1974  
1975  
1976  
1977  
1978  
1979  
1980  
1981  
1982  
1983  
1984  
1985  
1986  
1987  
1988  
1989  
1990  
1991  
1992  
1993  
1994  
1995  
1996  
1997  
1998  
1999  
2000  
2001  
2002  
2003  
2004  
2005  
2006  
2007  
2008  
2009  
2010  
2011  
2012  
2013  
2014  
2015  
2016  
2017  
2018  
2019  
2020  
2021  
2022  
2023  
2024  
2025



, EC

# Summer Work Travel students end up cleaning rooms with no cultural exchange opportunities

D  
LC  
B  
J  
-H  
D  
G  
-A

M

-C

-M

... ..

... ..

A A F A C A... DE F... ED... CA E B C



... .. J, ... ..

A ... ..

A ... .. E ... ..  
-I ... ..

E ... .. L ... .. A ... ..

-L ... .. A ... ..

A ... .. -L ... ..

L ... .. L ... ..  
-L ... ..

... ..

-I ... ..

● ... .. A ... ..



... .. A  
... .. D  
... ..  
... ..  
... ..  
... ..

... ..  
... ..

A ... ..  
... ..  
... ..

I ... .. L ... ..  
... ..  
... ..  
... .. -B ... ..  
... ..

L ... .. D ... ..  
... ..

L ... ..  
... ..

**Chakkvi "Maax" Suksawas**



Shevaughn Davis

A  
J  
J  
I  
A  
M B C

● M B ● J J  
-A  
-H  
J -E







... ..  
... ..  
... ..  
... ..  
... ..  
... ..

A A... A EEF ... E A



... ..  
... ..  
... ..  
... ..  
... ..  
... ..

A ... ..  
... ..  
... ..  
... ..  
... ..  
... ..

B ... ..  
... ..  
... ..  
... ..  
... ..  
... ..

M ... ..  
... ..  
... ..  
... ..  
... ..  
... ..

... ..  
... ..  
... ..  
... ..  
... ..  
... ..

1.  $\frac{1}{2} \frac{d}{dt} \int_{\Omega} |\nabla u|^2 dx - E(u) = \int_{\Omega} u \frac{d}{dt} \int_{\Omega} |\nabla u|^2 dx - E(u)$

L  
A  
I

**Fernanda Alquinga Defaz**

J  
E -A  
J  
I  
-I  
A

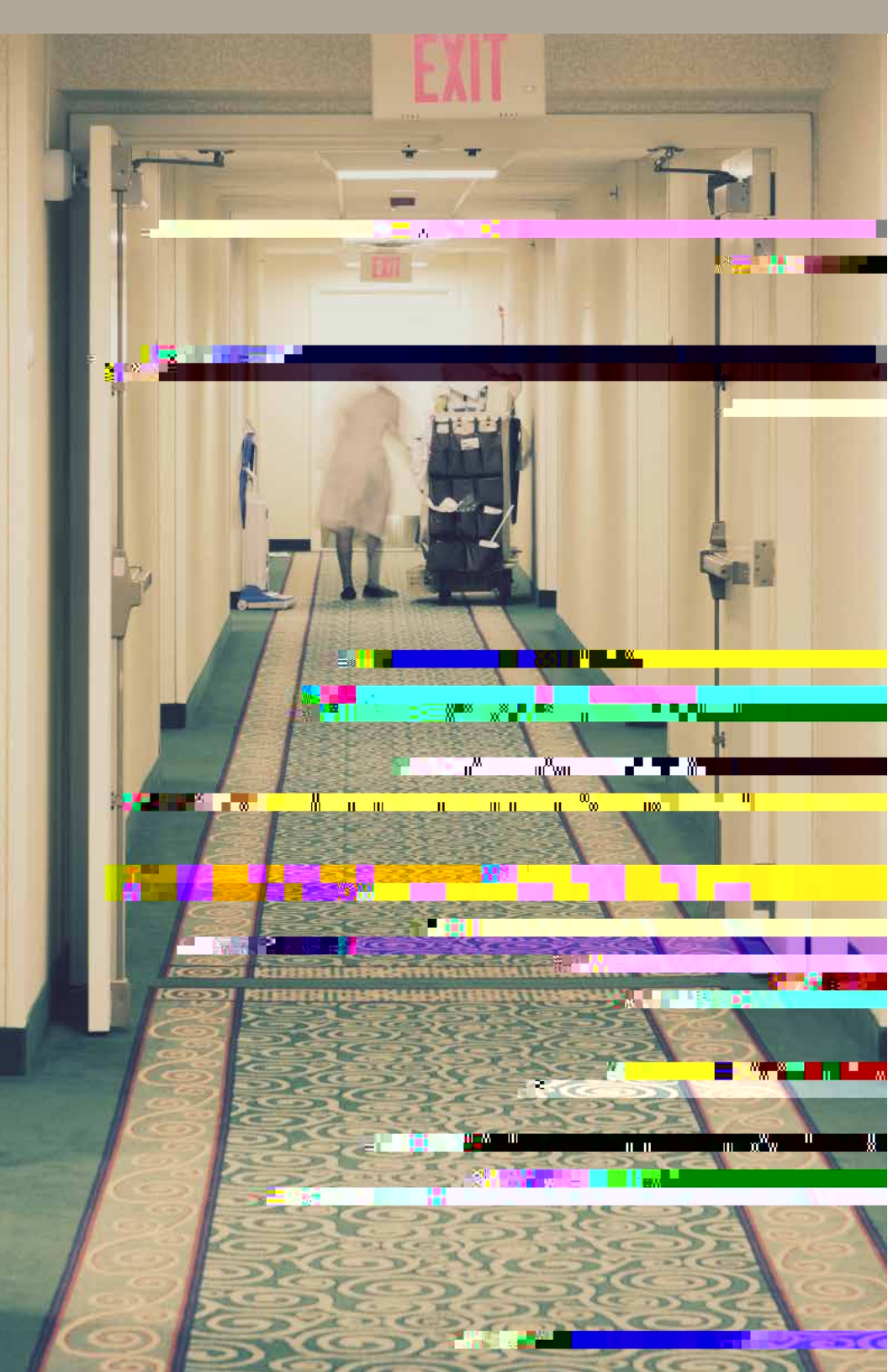


... ..  
... ..  
... ..  
... ..

... A A, E A A A... A EEF ... A A D



F  
... E ... J, -B  
-I  
I  
A. F ... E  
... M ... B ... C- ...  
... I ... I ... I  
I ... -B, I ... I  
H ...  
F ...  
J, ... D ... L ...  
D ... L ... F ... J,  
I ... I ... I ... I  
... J, ...



# J-1 workers vulnerable to trafficking, other dangers

J, I, E, D, J, D, J, B, M, H, B, A, F, L, A, H, B, J, J,

A

AB A AA E F E A E



**J-1 workers flood charities**

● J  
I M A ● C  
B C J

I B  
J

A  
L B J  
C NC

I  
B A  
E J LC -A

M H  
J

●  
G A -H  
J





A  
J -H  
-H  
-H  
B  
D  
A N  
LC  
J -F



# New laws, regulations required to protect J-1 foreign exchange students and U.S. workers

J, E ... -F ... I ... A ... J, ... -I ... -C ... D

## RECOMMENDATIONS FOR THE SUMMER WORK TRAVEL AND TRAINEE AND INTERN PROGRAMS

### I. Recommendations for Congress:

- ... J, ...
- ... J, ...

- D ... L ... J, ... J,
- A ... D ... L ... J,
- ... J, ... -F ... J,
- ... J,
- I ... J,
- G ... J,
- M ... J,

**II. Recommendations for the Department of State and other federal agencies administering the J-1 program:**

- D ... D ... L ...
- ...
- H ...
- ...

→ J, ...

→ ...

→ E ... J, ...  
H ... H

→ ... D ... L ... D ...

→ I ... J, ... J, ...

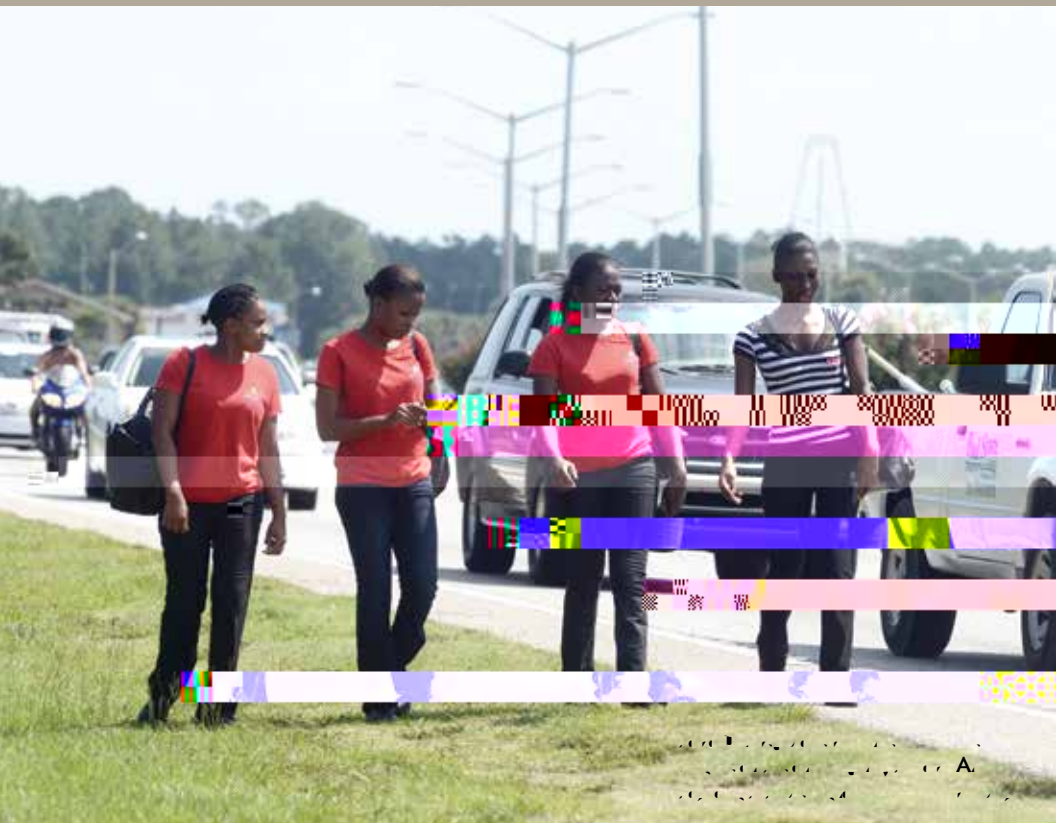
III. Recommendations for Trainee and Intern Program regulations:

→ ... F L ... A ...

→ ...

→ ...

→ ... D ... D ... L ...



## E D E,

1 22 U.S.C. § 2451.

2 26 U.S.C. §§ 3121(b)(19), 3306(c)(19).

3 S , . ., Seasonal Staffing Solutions, [www.seasonalstaff.org/Tax-Benefits-For-Employers-Hiring-J1-Foreign-Staff.html](http://www.seasonalstaff.org/Tax-Benefits-For-Employers-Hiring-J1-Foreign-Staff.html) (“American Employers can legally save 7.79% off their total payroll expenses simply by promoting cultural exchange and hiring J1 students.”) (last visited Nov. 7, 2013).

4 S , . ., *U S v. S v. T. R. A. , et al.*, No 11-cr-00614-VM (S.D. N.Y. filed Nov. 17, 2011) (J-1 SWT students forced to work as exotic dancers in New York); *USA v. B r a , et al.*, 3:07-cr-00114-LC-2 (N.D. Fla. filed Sept. 18, 2007) (J-1 SWT students used in labor trafficking scheme in the Florida panhandle).

5 U.S. Dep’t of State, *2013 Trafficking in Persons Report* 385-86, [www.state.gov/documents/organization/210742.pdf](http://www.state.gov/documents/organization/210742.pdf).

6 77 Fed. Reg. 27,593, 27,601 (May 11, 2012) (discussing the SWT program in light of high youth unemployment rates).

7 Fredreka Schouten, *Immigrant Students Face Challenges in Finding Jobs*, USA Today, June

26, 2013, [www.usatoday.com/story/news/politics/2013/06/26/immigration-bill-carveouts-](http://www.usatoday.com/story/news/politics/2013/06/26/immigration-bill-carveouts-)

Oct. 6, 2011, [www.theworld.org/2011/10/j-visa-exploiting-foreign-students/](http://www.theworld.org/2011/10/j-visa-exploiting-foreign-students/).

25 David Wenner, *Foreign Students at Work Exploit Harrisburg, Pa.*, The Patriot-News, March 11, 2013, [www.pennlive.com/midstate/index.ssf/2013/03/mcdonalds\\_foreign\\_students\\_che.html](http://www.pennlive.com/midstate/index.ssf/2013/03/mcdonalds_foreign_students_che.html).

26 See 22 C.F.R. §§ 62.32, 62.15, App'x D (requiring sponsors to submit annual reports on their activities).

27 See *Swartz v. Icahn*, 38 (discussing the conflict of interest inherent in the SWT program).

28 22 C.F.R. § 62.32(g)(2).

29 U.S. State Dep't, *Closed-Sanction-cases-2006-to-Date-Master\_Final.pdf* (last visited Nov. 4, 2013), [www.state.gov/j1visa.state.gov/wp-content/uploads/2013/09/Closed-Sanction-cases-2006-to-Date-Master\\_Final.pdf](http://www.state.gov/j1visa.state.gov/wp-content/uploads/2013/09/Closed-Sanction-cases-2006-to-Date-Master_Final.pdf) (last visited Nov. 4, 2013).



46 22 C.F.R. § 62.22(f)(2)(v).

47 *S. v. U.S. State. Trial, et al.*, No 11-cr-00614-VM (S.D. N.Y. filed Nov. 17, 2011) (J-1  
SWT students forced to work



To find these stories and more, visit  
[\*\*sp.lc/culture-shock-report\*\*](https://sp.lc/culture-shock-report)

**SPLC**  **South**

**L**